



## *Scientific Analysis of Homoeopathy*

Dr. A. B. L. GUPTA

*I owe My deep gratitude to wing commander Dr. B.R. Chawla, a renowned homoeopath without whose active participation and excellent ideas, this summary would not have been in this form.*

### **1. INTRODUCTION :**

1.1 This paper seeks to explain the concept of homoeopathy in relation to the modern science as well as ancient philosophy. It explains the role of human mind in creation of the diseases and the necessity of counteracting the disease by the homoeopathic doses of appropriate energy level.

1.2 one of the things, that has puzzled scientific investigators, is the persistent recurrence of stories relating to the extra sensory perceptions. Such stories continue to come to light without proper explanation. There is one, where a woman dreamt, that her son was killed in a battle. She awoke, looked at clock, it was 2 A.M. the next day a telegram arrived stating, that her son had been killed at 2 A.M. Another woman dreamt, that she was visited by her son, who said, "I am leaving this world and going to a better place and won't be able to see you again. She received a message the following day, saying that, her son had left the physical world."

1.3 A common man regards such incidents as mysteries. Homoeopathy is no less a mystery, whose mechanism of drug action is still puzzling the doctors and scientists. Since homoeopathic drugs work miraculously and wipe away the pathology from the human body, the inquisitive homoeopath, therefore, cannot remain quiet without satisfying his curiosity for how and why. In my opinion, *the answer lies in understanding the totality of human life, in scientific terms*, that is, knowing fully well about body, mind and soul. This is absolutely necessary, because body, mind and soul are the integral parts and all the three put together alone make a complete individual. Let us, therefore, analyse various relevant data one by one in the proper sequence.

## 2. SCIENCE AND HOMOEOPATHY

2.1 The masses have generally misconstrued the meaning of science, specially medical science. This is why, most of us get possessed by seeing modern diagnostic machines viz. X-ray, cat-scan, electron-microscope etc. let us therefore, re-understand correctly, what science means. Science can be graded into following categories:

1. Precision 2. Reasoning 3. Systematic study of some subject through observation/experimentation.

**2.2. PRECISION :** This is the first grade of science. The most precise branch of science is mathematics, where  $2 + 2$  must be equal to 4 only. Astronomy is also a precise science, as the same is based on mathematics. A very prominent branch of mathematics is calculus, where we differentiate and integrate between 0 &  $\infty$ . Here it would be quite appropriate to quote Dr. Albert Einstein, the greatest scientist, of our nuclear era, who in reply to a question, "what is God" remarked "Mathematics is God", because it never changes and the conclusions derived from mathematical laws are final. *No man of whatever standing he may be, is above these conclusions.*

**2.3. Reasoning:** This is the second grade of science. In this branch the abstract sciences, like geometry and philosophy are studied. These sciences are not so precise, but from logic and arguments, one can arrive at some rational conclusions. These sciences are based on the laws of induction and deduction. Homeopathy is also an abstract science and the degree of precision of mental and pathological symptoms studied under this science is matchless, therefore, it can be categorised under the first grade as well as under this grade also.

**2.4 Systematic Study of Subjects:-** This is the third grade of science. In this branch, subjects like, geography, biology, zoology, botany, anatomy, physiology, and pathology etc. are studied. These sciences have no direct relationship with mathematics and hence the degree of precision is not so high as in first grade or rather is comparatively much lower.

## 3. ENERGY:

3.1 The present concept of study of modern medical science is based on the study of anatomy, physiology and pathology etc, but the study of sensations, perceptions, feelings, thinking, willing and

understanding forms the core of study under homoeopathic *science*, which means the study at energy plane. We know, that the energy is that, which is capable of generating some work and it exists in the forms like, heat, light, sound, magnetic, kinetic and potential etc. On the other hand, matter signifies an inert mass. For quite long, matter and energy were considered to be quite different. However, after the nuclear fission, science has declared, that the division between matter and energy no longer exists, and that the entire matter world has come into existence from the permutation and combination of energy waves in different wave-lengths and amplitudes. Similarly it appears reasonable, that the human pathology is caused due to the disturbance of energy waves (thought impulses) flowing into the human system. This hypothesis shall be analysed in the later part of this paper.

3.2 following points are of interest to us and shall be found useful in this analysis.

- (i) The energy-cycle control and regulate the entire matter-cycles.
- (ii) Energy is at much subtler plane and is the cause of matter.
- (iii) Energy increases with the increase in the frequency (According to Max Planck, electromagnetic energy is emitted by a charged particle in packets of energy, which are multiple of quantum of energy equal of  $h\nu$  & Where  $\nu$  is frequency of radiation and 'h' is Planck's constant).

#### 4. HOMOEOPATHY VERSUS PATHOLOGY:

4.1 The study of pathology is limited only upto the level of  $0.25 \times 10^{-8}$  c.m. (Range of electron micro-scope) and  $10^{-7}$  c.m. range of x-ray), while the study of homoeopathic science reaches upto the energy plane, say  $100^{-30}$ ,  $100^{-200}$ ,  $100^{-1000}$  c.m. and even higher. This is why, as long as the disease exists at psychic plane, the modern science, that is pathology-based-diagnosis fails to diagnose any disease, because their diagnosis is based on comparatively cruder machines. For example very often the patient complains of several symptoms viz, excess and frequent thirst or urination without detectable pathology, unusual sweat, frightful dreams of snakes, unreasonable anger and anxiety, timidity, canine hunger, anorexia, foul odour from various body excreta etc. these and numerous other symptoms are not considered any disease and are often ignored, *but they actually are the manifestation of symptoms of disease existing at psychic plane.* These are either the manifestations of the chronic

miasmatic affections transferred through genetics or caused due to recurring disturbed mental state during one's life time. *This is a very difficult concept even for a homoeopath as well*, who some-times like a modern allopath, is not able to rise above the idea of infection, bacteriology and virology etc.

## 5. PHILOSOPHY OF MIND:

5.1 The majority of the mankind believes only in what their senses perceive. Such persons accept as un-questionable any thing that their senses convey to them. They fail to understand, that their senses at best are imperfect instruments and the intellect is constantly employed in correcting the mistaken reports of the senses as perceived in the mind. Modern scientific thinking has reached a stage, where physicists have been forced to abandon the ordinary world of our experience i.e. the so-called world of sense perceptions. They have crossed the border that divides physics and metaphysics. Our senses delude us by bringing knowledge that changes very often. Stimuli from sense organs often creates false pictures, an example is, a stick plunged into water appears broken, though in reality it is not so. Sweet and bitter, hot and cold, sun and earth, the whole objective universe of matter and energy does not exist independent of the mind. Even time and space are nothing, but the projection of mind. There is *nothing to limit the soul within time and space*, if there is no mind. All limitations and barriers disappear with the disappearance of mind.

5.2 At our present stage of realisation, all our knowledge of the universe is a residual of impressions clouded by imperfect senses. Reality is far away from our present state of consciousness. For example, there are electro-magnetic-waves, such as, gamma rays, x-rays, cosmic rays, and radio waves etc, that are not visible to the human eye. Yet through new instruments, we are now aware of *such energies of lesser frequency and greater wavelengths*. These limitations of human senses are now being studied by modern scientists and this has forced them to think of some higher avenues, which ultimately lead to metaphysics. The search for fundamental particles constituting the universe is going on.

5.3 Since every action performed by the human body is merely the translation of a thought-impulse, therefore, thought is a motive power for the human body, but the emotion is far more powerful than the steam, which runs the engine.

Every human mind is often subjected to the various emotions viz, love, hatred, anger, fear, greed, envy, jealousy etc. *All evil impulses arising in the mind proceed from the desires to possess something and then these emotions affect the endocrine glands, which are governed by the nervous system and cause disorders in the normal functioning of the internal organs. Even after the emotion has apparently disappeared from the mind, its impression is left on the magnetic tape of the sub-conscious mind. Greater the attachment with the object, deeper the impression on the sub-conscious mind.*

5.4 In the recent past, two doctors of New-York hospital made a careful and unusual study of the behaviour of the stomach and digestion of a patient, whose belly was excellently blasted by a gun leaving a gapping hole for the rest of his life. Through this hole in the abdominal wall, the doctors could study the mysteries of the human digestion. According to the report of the doctors, the most damaging emotion is anxiety, which is the cause of ulcers. Investigations, showed the patient's stomach was pale, pink and relaxed with many convulsed folds while at ease, but bright red, smooth and tense, when he became angry. Both the face and the stomach turned pale, when he was upset by fright. Depression shut off the flow of gastric juices and his stomach was almost incapable of digesting any food. This is because under this condition, the sub-conscious mind loses its power due to which the regenerating power of the conscious mind (brain) also gets depressed.

5.5 Very often we find that an average man thinks very little. Thinking becomes merely mechanical in our daily life. With the repetition of impressions, habits are formed and thereafter the subconscious mind goes on functioning involuntarily. *Any idea from the intellect consciously or un-consciously comes to it and is carried out faithfully to the very latter.* Old notions and tensions lying subconsciously can be corrected and removed through positive auto-suggestions or instructions by the intellect of the individual or by someone else. It is worth-while to note that the sub-conscious mind works even in sleep without any rest and it is amazing how helpful it is, for example-when we have to catch a plane early in the morning, all that we have to do, is to suggest to the sub - conscious mind to wake up at certain time and it does. In fact, *it has got infinite potential.* The sub - conscious mind does not carry out only good instructions from the intellect, but also wrong or evil instructions as well. This is how, un-necessary fears anxieties and worries created during our daily

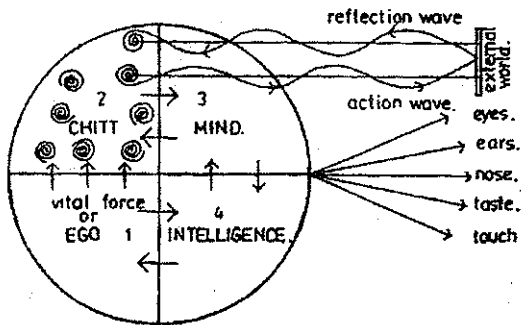
activities are taken up by the sub-conscious mind and later on projected to the conscious mind. A shock or fear in the childhood will torment a person even when he is old, unless he is helped by counter suggestions. *Homoeopathy seeks to counter the diseases at this plane.*

5.6 In the sub-conscious mind or plane lie on the knowledge and impressions received from various sources not only from this life, but also from various incarnations, because it serves like a store house having every thing known and unknown, and also keeps on well folded within itself. Nature keeps away the miseries of the past life from the conscious mind, otherwise it would increase our mental tensions by reviving past good and bad memories. Some persons are able to do things, that they have not done or learnt in this life. Some children can paint well and sing well without even going to the school. Some are born orators, authors and preachers. These are the facts of life. Thus it implies, that the knowledge they have mastered in their previous lives was lying dormant in the sub-conscious mind, and the same is now manifesting in life. Such persons are called genius or gifted. This should be true for the subsequent lives also, as explained ahead under the 'law of cycle'. (Refer para 7.2).

### 6. STRUCTURE OF SUBTLE-BODY :

6.1 We all know, that homoeopathy has its roots in philosophy and the study of philosophy begins with the study of psychology. Also, that the physical and astral bodies are intimately connected, where mind is the real master of the physical body. It is, therefore, essential to know something about it. (Refer Fig. No. 2 below).

#### STRUCTURE OF SUBTLE-BODY



(Fig No. 2)

#### Sub-Conscious Plane

6.2 The subtlest animating principle (spirit) requires a subtle equipment as a medium for its manifestation in the material body. This

equipment is known as subtle-body, which pervades through out the system. It comprises of the conscious and sub-conscious planes. The concept of this subtle body can be brought under four heads.

**(a) Sub-Conscious Plane:**

(i) *Ego* : This is the real vital principle or energy source.

(ii) *Chitt* : It is also known as sub-conscious mind, which records all electrical impulses transferred from the conscious mind in the form of cassettes and governs the function of the conscious mind. It is the seat of intuition and instincts.

**(b) Conscious Plane:**

(iii) *Mind*; it is the thinking mind and is the seat of emotions and sentiments. All stimuli received from sense organs first produce impact on this part. This part is highly sensitive, emotional and is apt to commit wrongs frequently. Greater the emotion, deeper is the imprint on the sub-conscious mind.

(iv) *Intellect* : This is the part of thinking mind, but differs in the way, that it has the capacity of discrimination and taking decisions. This is the seat of intelligence. Without the consent of this part of the mind, no cassette, is normally transferred to the sub-conscious mind (*Chitt*). Only at the time of deep emotion, the function of this part is almost shut off, otherwise it acts quite rigidly and tries to follow the logic and reasoning. It carries out frequent corrections to the wrong perceptions arising in the thinking mind caused due to the impact from the external stimuli. In turn, its function is influenced by the pre-recorded impulses emanating from the sub-conscious mind (*Chitt*).

6.3 At first sight, it would appear, that the conscious part of the subtle-body does most of the work, but a little reflection will show, that conscious reasoning of the mind is only a part of its total function and that even the highly evolved men of today act on the instincts from the sub-conscious mind, although it is stated to be from the incoming rays of intellect.

Deeper analytical studies of this subtle body by Indian philosophers have resulted into the evolution of scientific concepts of Dharma (Righteousness), as described in Upanishads, which lay down the various techniques of YOGA leading to complete liberation (*Moksh*) of the man from the cycle of life and death.

## 7. Psychology :

7.1 Since the nature functions rigidly according to the fixed laws, let us, therefore, study some basic fundamental laws, which will explain the recurring stories on account of extra sensory perceptions and functioning of the human mind as well as the causation of the pathology. The learned readers/ scholars are requested to focus their deep attention, so that the following discussion becomes interesting, useful and important too.

### 7.2 Law of continuity or law of cycle :

7.2.1. A tiny seed grows into a tree as high as upto 300 feet and again the tree produces numerous tiny seeds. The hen produces eggs and ocean changes into snow on the peaks of mountains and vice-versa. There are cyclic currents in the ocean and atmosphere. Like nitrogen and carbon cycle, there is continuity or a cycle in all spheres of life activities. This is termed as "LAW OF CONTINUITY" or "LAW OF CYCLE" and is applicable at all planes from grossest to subtlest.

7.2.2. In accordance with this law, the cause changes into effect and vice-versa. Similarly thought changes into action and action again has to change into seed of thought-impulses. Like the television telecast, the drama staged at the relay station is converted into electromagnetic waves, which are sent through the transmitter in the atmosphere and are received by several T.Vs via their antennas switched on the same frequency. These electro-magnetic waves are then re-converted into light and sound energies. This is what also happens with us in our life. *Internal tendencies manifest, as external reactions, which in turn give feed-back to the internal and the cycle thus goes on.*

7.2.3. These seeds of thought-impulses tend to form a cassette like structure, which is stored in the sub-conscious mind in order to generate future actions as per "LAW OF CYCLE". This cycle may be termed as Desire-Thought-Action-Reaction-Cassette Cycle'. (Refer figure No. 1-d below)



**ILLUSTRATION OF LIFE-CYCLE**

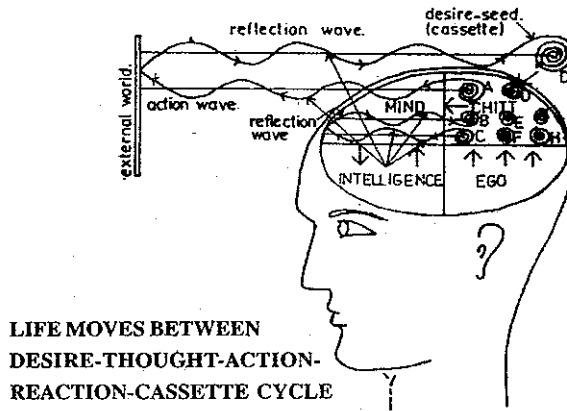


Figure-1d

7.2.4. We all know. How a cassette is recorded, which on replaying produces same sound as originally recorded. Each sensory cassette consists of recordings due to stimuli from five sense organs and each one is associated with a thought-impulse. The approximate proportion of such stimuli has been observed as under.

Light = 83% Sound = 10% and smell, Taste & Touch = 7%. Thoughts provide energy for these cassettes to replay at an opportune moment.

7.2.5 The Sub-Conscious mind (Chitt) continuously functions and like a magnetic tape of a cassette faithfully records the electromagnetic waves induced due to numerous stimuli received from the five sense organs. Each stimuli is associated with a thought-impulse rising in the conscious mind due to the impact of external events and carries energy in relation to the amount of attachment, which the particular sense organ has with the specific event in the external world. No recording takes place in the Sub-conscious mind, if the conscious mind is not attached at all with that sense organ at the particular period. Greater the attachment of the conscious mind with the specific sense organ deeper is the imprint of the particular event on the magnetic tape.

**7.3 Law of Action and Reaction or law of Karma:**

7.3.1. Human mind functions exactly like a perfect computer. This function is performed by the sub-conscious mind (chitt) in two stages.

(i) Collection of data (cassettes) and feeding the same into the computer.

(ii) Delivering the result on computerisation (computation). Like a calculator (mini-computer), the human mind (computer) also has got keys to feed and rectify wrongly fed data as well as for processing result. Just as the result from the computer flows out without bias as soon as the result key is pressed, in the same manner the data, which are constantly fed into the human computer produce results out of its perfected mechanism without bias.

7.3.2. The quality, kind and texture of the result produced shall entirely depend upon the quality, kind and texture of the data (cassettes) fed into the human computer. The attachment to a certain object or event is the key to produce result. The period of maturity of the result directly depends upon the degree of attachment. Other cassettes (data) even though fed into the mind go waste without producing results, if there is no attachment at all. The sorrow and happiness, failure and success, calamity and prosperity, health and disease are the unbiased results produced from the human computer. This is what is termed as "Law of Action and Reaction" or "Law of Karma" which is universally known, "As you sow, so shall you reap".

*Thus the disease is the second name of the heavy pollution due to evil thoughts, actions in the mind. Just as atmospheric-Nitrogen solidifies and forms into fertilisers through various chemical re-actions, in the same manner putrefied (evil) thought-impulses under several internal and external forces can give rise to any number of pathology, such as jaundice, ulcer, calculi, cancer etc.*

## 8. Evolution of Pathology:

8.1 *Due to electro-magnetic character of the cassettes, the specific type of susceptibility (disease-seed) will attract only specific type of bacteria/virus from the ocean of space to complete a specific pathology. This is how, no two persons shall express identical sufferings, even though the exciting causes may remain the same in both the cases. Each man will have different quantum and period of sufferings depending upon several factors viz. inheritance, food-habits, individuality etc.*

8.2 The philosophy teaches us, that an individual is normally

subjected to the following ten negative thought impulses:-

- |                       |                       |                      |
|-----------------------|-----------------------|----------------------|
| 1. Lust (Kama),       | 2. Anger (Krodha),    | 3. Greed (Lobha),    |
| 4. Attachment (Moha), | 5. Pride (Mada),      | 6. Enmity (Matsara), |
| 7. Hatred (Ghrana),   | 8. Jealousy (irshya), | 9. Envy (Dweshha),   |
| 10. Fear (Bhaya).     |                       |                      |

According to the permutation law of mathematics, more than 36 Lakhs of disease symptoms can be produced only by feeding ten negative thought-impulses (cassettes) into the human computer (chitt).

8.3 *Just as electromagnetic cosmic energy-waves in various Wave-Lengths and amplitudes form into infinite number of matter around us, in the same manner in the human body also, the disturbed electrical impulses caused by the disturbed signals from the sub-conscious level(chitt) flowing from the central nervous systems towards the various organs of the body, disturb the biophysical strata and precipitate into various pathology in due course, and also one disease can change into another depending upon several permutations of disturbed energy waves from the mind and/ or various external forces.*

## 9. Miasm:

9.1. We all have an experience of a man under fury and rage. During the fit of anger, the man shows certain symptoms viz. he starts shaking, face becomes red, throat and mouth parches or excess saliva secretes and he spits, blood-pressure rises, heart palpitation increases, frequent urination starts, respiration also becomes fast, unusual sweat occurs and so on. There is an overall increase in the temperature of the body. To balance this abnormal condition so produced, various hormones including 'Adrenalin' are secreted and the whole system is terribly shaken and becomes im-balanced. Such acts, when repeated in life take a shape of involuntary acts called habits. Such repetitions carve out a deep impression or tendencies over the magnetic tape of the sub-conscious mind and the symptoms, which were produced at the time of such fits of emotions e.g. anger, hatred, enmity, greed, lust or attachment etc. start occurring even without the actual anger or other negative impulses being generated, as soon as some exciting cause in the external world is met with. *Just as after winding, the spring of a watch unfolds itself due to stored energy, similarly the sub-conscious mind has special characteristic feature to manifest its stored*

electromagnetic energy (cassettes) in the form of in-voluntary acts. If these primary symptoms (in-voluntary acts) of disease-seed (miasm) are allowed to continue for long, then they are bound to precipitate into numerous Pathology in due course. (Refer Figure No.3.C)

**EMERGENCE OF PATHOLOGY**

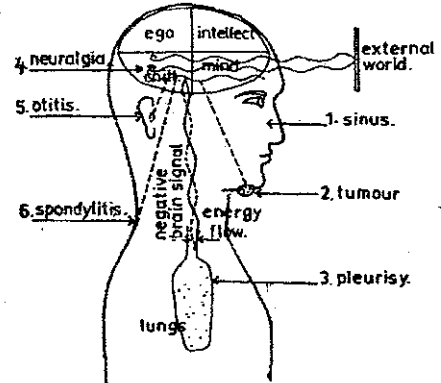


Figure No- 3c

9.2 Such repeated emotional fits of anger and other nine negative thought impulses permute and form into specific disease-seed (miasm). Refer Figure No. 3A & 3B below. Indiscriminate use of sex combined with anger and greed produce psychic knots explained as sycosis and syphilis respectively by Dr. S. Hahnemann, while other nine negative impulses mentioned in para 8.2 combined shall form disease-seed (Miasm) known as psora. Different permutations may result into other three miasms known as tuberculosis/scrofula and carcinoma.

**FORMATION OF MIASM (disease-seed)**

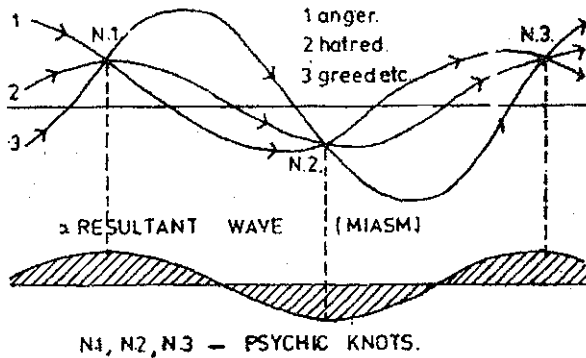


Figure No- 3A & 3B

**10. Thermo-Electrical Energy:**

10.1. On combustion of carbohydrates during respiration, thermal energy is produced, which maintains the cells of the body at a fixed temperature. This is measurable by the thermometer. This energy helps the cells of the body to function smoothly. Due to the potential difference ranging from (-) 80 to (+) 40 MEV (Milli-Electron-Volt) bio-electrical energy flows into the system. This energy keeps the

communication between the central nervous system and upto the outermost layer of the body. This energy is responsible for smooth functioning of the entire body. Due to its electrical character, a magnetic field is naturally generated through-out the system.

## 11. Mechanism of action of Homoeopathic drugs:

11.1. These Thermo-electrical impulses flowing into the body straight away carry the energy transferred from a homoeo-drug through the touch over the tongue or over any mucous membrane and the message is directly transmitted to the central nervous system (C.N.S.). Instantaneous correction to the wrong impulses being generated by the sick body follows, provided the drug is selected correctly. The correction occurs only, if the two frequencies and amplitudes are similar as per the law, 'Like cures Like' that is, the frequency and amplitude of the energy transmitted by the homoeo-drug and of the impulses being generated by the C.N.S. at a particular hour of sickness should be equal.

## 12. Annihilation of disease and plane of action:

12.1 it has been explained in para 8 & 9 above, how negative thought-impulses result in creation of diseases and miasms, which are nothing, but putrefied matter stored as electro-magnetic cassettes in the sub-conscious mind. Therefore, it becomes necessary to strike this subtle putrefied matter through the subtle matter of equivalent energy level in order to annihilate the disease. It may be noted here, that the penetration of any gross matter drug is only upto the bio-physical strata and the disease, in most of the cases is either suppressed or palliated and changes to new channel of manifestation, that is to some new pathology in due course. (Refer para 8.3)

12.2. during our daily activities every human being is normally subjected to some evil thought/ emotion, that is why, it may be stated that almost the whole of the mankind is suffering from miasms and therefore, no patient can ever be cured without clearing these psychic

### PROCESS OF TOTAL CURE DISINTEGRATION OF MIASM

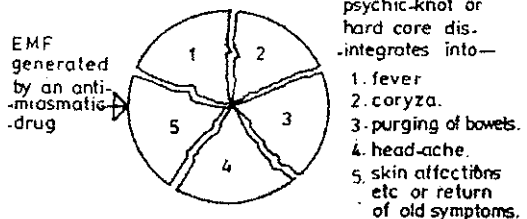


Figure No- 4c

knots. Anti-miasmatic drugs resolve these knots and thereafter suitable constitutional drug completely annihilates the disease. (refer Fig no. 4-c & 4-d )

This is how, homoeopathy claims to eradicate diseases

transferred through inheritance also. It may be noted here, that cure follows after the total correction is made at psychic level, that is, when the disease-seed contained in the ancient cassettes is completely eliminated from the sub-conscious level.

### ANNIHILATIO OF DISEASE

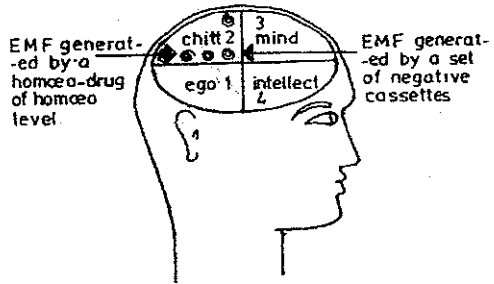


Figure No- 4-d

12.3 in view of the large number of permutation possible, there can never be a single therapeutic solution of any disease. A true homoeopath, therefore has no choice, but to prescribe on total behavioural pattern (tendencies) of the patient to achieve cure. To co-relate therefore, any homoeo drug with any pathological name is mere illusion and un-scientific, because it shall always remain un-known as to what psychic forces have gone into permutation to form a particular pathology. In true sense, homoeopathy is 'person specific' and not 'disease specific' and correct prescription can only be made by comprehending the total and *precise* psychic constitution of the patient. This is how, the constitutional drugs viz sulphur, pulsatilla, natrum-mur, sepia, nux-vomica, silicea etc. Cure the patient completely provided the psychic constitution tallies. The study of pathology may help in arriving at the probable psychic built up of a patient, but pathology alone shall only be mis-leading in the diagnosis of a correct homoeo-drug.

12.4. if Avogadro's hypothesis is applied, then there is no matter-molecule left in the homoeo-dilutions after 12<sup>th</sup> potency, even then each potentised homoeo-remedy carries energy and has specific frequency and amplitude. The energy emitted by each remedy should be measurable in terms of milli-electron volts. This energy varies with the higher and lower dilution prepared as per hahnemannian principles. Each pathology generated at a particular hour is caused due to the disturbed electrical impulses from the brain (Refer fig no-3c under para no. 9.1) and carry specific frequency and amplitude.

As per law of similars and vector diagram (refer Fig No. 4a & 4b below), the two factors viz frequency and amplitude applied in the same direction should be equal. On resolving the forces, the vertical forces (A) cancel each other and horizontal forces (B) get added up, to the thermo-electrical energy of the body. This is why the correct homoeo-drug immediately raises the energy level of the patient without any tonic, and the patient is completely cured in due course. Thus the 'law of similars' is proved mathematically.

#### HOMOEEO TREATEMENT

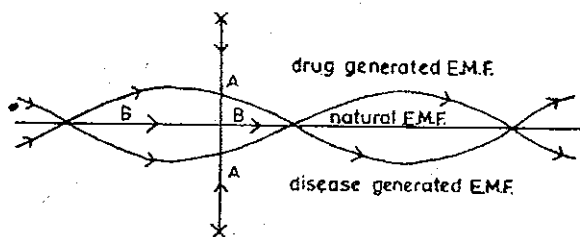


Figure No- 4a

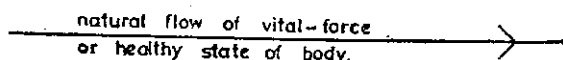


Figure No- 4b

### 13. Selection of a Similimum-an experience:

13.1 if a correct similimum is administered to a patient, say 6 globules dissolved in water (Potency 6 or 30) and two to three doses taken within half an hour, the patient expresses a feeling of cheerfulness and well-being. The sleepiness may also be induced indicated by a few yawnings. At times, few eructations followed by passing down the flatus has also been observed. The first two symptoms are quite reliable. In case the drug chosen is not correct, the patient reports heaviness over the head with disturbed state of mind and the drug fails. In case the patient approaching the doctor is already sluggish and depressed, then he gets energised and cheered-up with the correct similimum. The author has experienced this in number of cases. *Thus the 'law of similars' is corroborated by practical demonstration* (The learned doctors are requested to verify this experience and report in the journal for the information of the homoeopathic society)

### 14. Summary :

14.1. In the end, may I conclude, that every one of us, however great or small, saint or sinner, rich or poor, king or beggar strives for

happiness and not for misery. *But all miseries of life including sickness* precipitate from the negative (evil) impulses generated into the human computer (mind) either during one's life-time or transferred through heredity, Known as 'miasms'. Also all diseases are directly related to the specific psychic built-up of the individual.

14.2. According to the permutation law of mathematics the number of disease-symptoms, which can be produced on feeding ten negative thought-impulses into the human computer, work out to 36,28,800 Nos. and shall run into infinity, if the frequency and amplitude of these impulses are slightly varied.

14.3. it is, therefore, incorrect to treat the patient from pathology-based-diagnosis. Instead the mind-based diagnosis should be the criteria for selection of a homoeo drug, of-course keeping the totality of symptoms in view.

14.4. Specific disease-symptoms are manifested due to the emission of the specific electromagnetic waves from the human brain, which have specific frequency and amplitude.

14.5. Each homoeo-remedy carries energy and has specific frequency and amplitude.

14.6. The total cure takes place when:-

a) The homoeo drug energy is applied in the same direction but with a phase difference of  $180^\circ$ . This adjustment automatically takes place by the 'Prana' (Electromagnetic energy) of the patient.

b) The amplitudes and the frequency of the homoeo drug energy is the same as that emitted by the human brain. (Ref. Fig Nos 4a & 4b). No patient can ever be cured without clearing the psychic knots (miasm). Thereafter a correct constitutional drug applied under the "law of similars", brings out total cure and the cure begins with the relaxation of mind. This can be practically demonstrated with a trial dose.

## 15. Future Research Recommended:-

15.1. An instrument may be devised to measure precisely the amplitudes and frequencies of the electromagnetic waves emitted by



the mind at the time of sickness and also of all the homoeo-drugs. A chart of amplitudes and frequencies of homoeo-remedies may be prepared for comparison with the waves emitted by the human mind. The attention of scientists and technicians may be drawn and precise electronic instrument may be manufactured and perfected, which may simplify the selection of a correct similimum and thus much of the time and labour shall be saved.

**Note:**

- (i) The article is an extract of the '**Thesis**' and has been re-typed after carrying out very minor amendments.
- (ii) The seriatum of the illustrations has been maintained same as in the main '**Thesis**'.
- (iii) The learned doctors are requested to send their views on the article.

---

**OFFICE OF THE CHIEF EDITOR  
HOMOEOPATHIC MEDICAL ASSOCIATION OF INDIA,  
CALCUTTA**

Editorial Comments :

After a deliberation or rather hesitation of some months. "We venture to publish this **hypersophisticated** article of Dr. A. B. L. Gupta, which is actually a summary of a big thesis prepared by the author." Our hesitation was only due to the fact, that the ideas presented by the author extend very far beyond the limits of the concepts on which we the general homoeopaths study and practise Homoeopathy, also the usual level of our intellectual acquirements. Ultimately we decided to print this summary only with a view to present to our homoeopathic society an idea as to how far the science and philosophy of Homoeopathy do extend in those respective fields. We are also aware of the fact that, we have in our society some homoeopaths whose intellectual calibre may be at least somewhat susceptible to these far-flung concepts."

January 1982

- CHIEF EDITOR

## APPENDIX

Very few cases based on the mind-based-diagnosis cured by the author are briefly cited below for the information of the learned readers :-

S. No.	Allopathic Diagnosis	Homoeopathic Symptoms	Homoeo Drug
1.	Intestinal T.B.	<ol style="list-style-type: none"> <li>1. A gland on the right side of the stomach.</li> <li>2. Excess Thirst, chilled water preferred.</li> <li>3. Lying on stomach-side ameliorates.</li> <li>4. Impaired memory.</li> </ol>	Medorrhinum
2.	Idiocy	<ol style="list-style-type: none"> <li>1. Lack of power to take decision.</li> <li>2. Lack of concentration, weak-memory, and slow in comprehension.</li> <li>3. Craze for vegetables.</li> </ol>	Alumina
3.	<ol style="list-style-type: none"> <li>a) Ulcers in legs with profuse pus</li> <li>b) Hacking Cough</li> <li>c) Chronic Insomnia &amp; Catarrh</li> <li>d) Epistaxis</li> <li>e) Dysme-norrhea</li> </ol>	<ol style="list-style-type: none"> <li>1. Excess thirst with dryness in the throat, but tongue is wet.</li> <li>2. Profuse sweating on the whole body.</li> <li>3. Gums swelling frequently.</li> <li>4. Discharge of Saliva.</li> <li>5. Thick Tongue.</li> </ol>	Merc-sol
4.	a) Arthritis	<ol style="list-style-type: none"> <li>1. Painful shoulders &amp; knees during rainy weather.</li> <li>2. Joints swelled, constricted &amp; twisted.</li> <li>3. First movements aggravates, later ameliorates</li> <li>4. Patient keeps on moving frequently. from one place to the other &amp; restless sleep at night.</li> </ol>	Rhus-tox
	b) Herpes.	<ol style="list-style-type: none"> <li>1. Water &amp; Rain aggravate.</li> <li>2. Burning in soles &amp; watery discharge from herpes over feet</li> <li>3. Restlessness.</li> </ol>	Rhus-tox
5.	Angina-pectoris	<ol style="list-style-type: none"> <li>1. Movement aggravates.</li> <li>2. Excess thirst drinks large qty. of water at intervals.</li> <li>3. Sluggish activity.</li> </ol>	Bryonia
6.	Chronic Dysentery with difficult breathing	<ol style="list-style-type: none"> <li>1. Cool temper with no thirst.</li> <li>2. Headache between 4 to 7 A.M. ameliorated by drinking tea and by pressure.</li> <li>3. Fried food disagrees.</li> </ol>	Pulsatilla
7.	Hyper-tension 180/115	<ol style="list-style-type: none"> <li>1. Cool temper with no thirst.</li> <li>2. Headache between 2 P.M. to 6 P.M.</li> <li>3. Stiffness of left side neck.</li> </ol>	Pulsatilla
8.	Chronic facial Neuralgia.	<ol style="list-style-type: none"> <li>1. Brooding nature.</li> <li>2. Pain in urethra after Urination.</li> <li>3. Severe neuralgic pain in the left side of the head upto left side of the nose.</li> <li>4. Pressure ameliorates.</li> </ol>	Staphy-sagria Colocynth Causticum
9.	Jaundice	<ol style="list-style-type: none"> <li>1. Tongue yellow</li> <li>2. Pain on gall-bladder region</li> <li>3. Desire for hot-drinks</li> </ol>	Chelidonium

Note: Antimiamatic drugs were given intercurrently when indicated.